

Rates

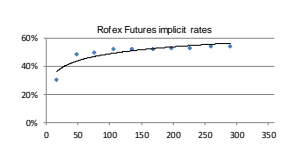
Table with columns: Instrumento, TNA, 14/12/2021. Rows include Cautión 7d, Cautión 30d, BADLAR Priv. (>\$1mm), TMO Priv. (>\$20mm), TFM - Leliq 7D, Pases Pasivos 7D.

BCRA A3500 USD \$101,773

Table with columns: Days, %Change, Annualized. Rows include 8d, 32d, 61d, 91d, 183d, 365d.

Rofex - ARS/USD Futures

Table with columns: Futures, Maturity, Days, USD, Rates, -d1, Ch, Op. 1. Rows include SPOT, DLR122021, DLR012022, DLR022022, DLR032022, DLR042022, DLR052022, DLR062022, DLR072022, DLR082022, DLR092022.



4.969

ARS - USD

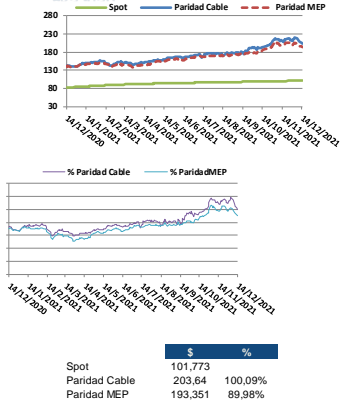


Table with columns: \$, %. Rows include Spot, Paridad Cable, Paridad MEP.

Bonds

Table with columns: Bond, Code, Amt Out, Coupon, Price, YTM, MD, Maturity. Row: Sovereign Bond Inflation Indexed.

Table with columns: Bond, Code, Amt Out, Coupon, Price, YTM, MD, Maturity. Rows include Bocon 24, Boncor 03-22, Boncor 09-22, Boncor 23, Boncor 03-23, Boncor 08-23, Boncor 03-24, Boncor 04-25, Boncor 11-26, Boncor 11-28, Disc ARL 05, Par ARL 05, C-Par ARL 05, Sovereign ARS Floating Badlar, Bocon 22, Boncor Abr 22, Sub-Sovereign ARS Floating Badlar, CABATD C20, CABATD C24, CABATD C28, PBA TD 2022, PBA TD 2025, Salta 2021, Santa Fe TD S1.

Table with columns: Bond, Code, Amt Out, Coupon, Price, YTM, MD, Maturity. Rows include Ledes ARS, Leppases ARS, LeCer ARS Inflation Indexed.

Table with columns: Bond, Code, Amt Out, Coupon, Price, YTM, MD, Maturity. Rows include Ledes ARS (S31D1, S31E2, S28F2, S31M2, S29A2), Leppases ARS, LeCer ARS Inflation Indexed (X31D1, X28F2, X31M2, X18A2, X23Y2, X30J2, X29L2, X16G2).

Bonds

Table with columns: Bond, Code, Amt Out, Coupon, Price (1), YTM, MD, Maturity. Rows include Sovereign ext. law USD, Bonos Int29 NYL, Bonos Int. 30 NYL, Bonos Int. 35 NYL, Bonos Int. 38 NYL, Bonos Int. 41 NYL, Bonos Int. 46 NYL.

Table with columns: Bond, Code, Amt Out, Coupon, Price (2), YTM, MD, Maturity. Rows include Sovereign Arg. law USD, Bonar 1% 29, Bonar 30, Bonar 35, Bonar 38, Bonar 41.

Table with columns: Bond, Code, Amt Out, Coupon, Price*, YTM, MD, Maturity. Rows include Bonte 04-22 - USD Linked, Bonte 11-22 - USD Linked, Bonte 04-23 - USD Linked, Sub-Sovereign USD (3).

Table with columns: Bond, Code, Amt Out, Coupon, Price*, YTM, MD, Maturity. Rows include Sovereign ARS Floating Badlar, BS. As. 37 NYL, BS. As. 37 NYL, BS. As. 37 NYL, CABADA 21 NYL, Coridoba 24 NYL, Coridoba 27 NYL, Coridoba 27 NYL, Mun. Cord 27 NYL, SF23D, Sta Fe 27 NYL, Jujuj 27 NYL, Salta 27 NYL, Chaco 24 NYL, La Rioja 25 NYL, T.Fuego 27 NYL, Chubut 30 NYL, Entre Rios 28 NYL, Rio Negro 28 NYL, Neuquen 30 NYL.

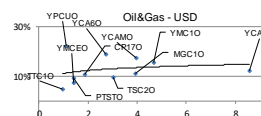
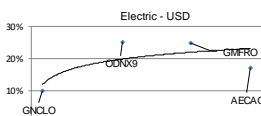
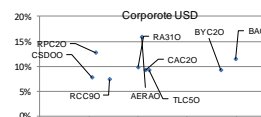
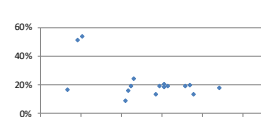
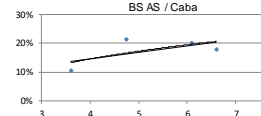
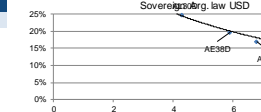
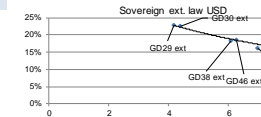
Table with columns: Bond, Code, Amt Out, Coupon, Price, YTM, MD, Maturity. Rows include Corporate USD, Gennesia 2022**, Edenor 2022**, ANSA 2023**, Clisa 2023**, Tepecitrol 2022**, YPF 2024, IRSA Prop. 2023**, Cresud 2023, YPF 03-2025, YMCEO, Albanesi 2023**, Pampa 2023**, Arcor 2023**, AAO200 2023**, CGC 2025**, CP170, AES Arg. G. 2024**, Raghsa 2024**, Capex2024**, Telecom 2025**, YPF 2025, TSC20, TGS 2025**, Telecom 2026**, Galicia 2026**, BYC20, Macro 2026**, YPF 2027, Pampa 2027**, YPF 2028, YPF 2047**.

Table with columns: Bond, Code, Amt Out, Coupon, Price, YTM, MD, Maturity. Rows include Corporate USD, Gennesia 2022**, Edenor 2022**, ANSA 2023**, Clisa 2023**, Tepecitrol 2022**, YPF 2024, IRSA Prop. 2023**, Cresud 2023, YPF 03-2025, YMCEO, Albanesi 2023**, Pampa 2023**, Arcor 2023**, AAO200 2023**, CGC 2025**, CP170, AES Arg. G. 2024**, Raghsa 2024**, Capex2024**, Telecom 2025**, YPF 2025, TSC20, TGS 2025**, Telecom 2026**, Galicia 2026**, BYC20, Macro 2026**, YPF 2027, Pampa 2027**, YPF 2028, YPF 2047**.

Table with columns: Bond, Code, Amt Out, Coupon, Price, YTM, MD, Maturity. Rows include Corporate USD, Gennesia 2022**, Edenor 2022**, ANSA 2023**, Clisa 2023**, Tepecitrol 2022**, YPF 2024, IRSA Prop. 2023**, Cresud 2023, YPF 03-2025, YMCEO, Albanesi 2023**, Pampa 2023**, Arcor 2023**, AAO200 2023**, CGC 2025**, CP170, AES Arg. G. 2024**, Raghsa 2024**, Capex2024**, Telecom 2025**, YPF 2025, TSC20, TGS 2025**, Telecom 2026**, Galicia 2026**, BYC20, Macro 2026**, YPF 2027, Pampa 2027**, YPF 2028, YPF 2047**.

Table with columns: Bond, Code, Amt Out, Coupon, Price, YTM, MD, Maturity. Rows include Corporate USD, Gennesia 2022**, Edenor 2022**, ANSA 2023**, Clisa 2023**, Tepecitrol 2022**, YPF 2024, IRSA Prop. 2023**, Cresud 2023, YPF 03-2025, YMCEO, Albanesi 2023**, Pampa 2023**, Arcor 2023**, AAO200 2023**, CGC 2025**, CP170, AES Arg. G. 2024**, Raghsa 2024**, Capex2024**, Telecom 2025**, YPF 2025, TSC20, TGS 2025**, Telecom 2026**, Galicia 2026**, BYC20, Macro 2026**, YPF 2027, Pampa 2027**, YPF 2028, YPF 2047**.

** Dirty Price
** Callable Bond - Yield to Maturity
Gráficos de Elaboración propia. Fuentes Rofex CAFCI y Bolsar



El presente documento ha sido realizado por Argenfunds S.A. con fines estrictamente informativos. No debe ser tomado como una invitación a suscribir cuotas... República Argentina de asumir, tácita o expresamente, compromiso alguno en cuanto al mantenimiento, en cualquier momento, del valor del capital invertido, al rendimiento, al valor del rescate de la cuota partes o al otorgamiento de liquidez a tal fin.